

Leaf and Debris Vacuum Operating Manual: 35 HP Series Truck Loaders



IT'S GOT TEETH



**Proudly Made in the USA
by Sound Manufacturing, Inc
ISO 9001:2008 Certified**

	Part No.	Model No.
35hp Skid Mount	MPE-SM35BVG	SM35BVG
35hp Tow Behind	MPE-TL35BVG	TL35BVG



Read instructions carefully and follow the rules for safe operations. Failure to do so may result in serious injury.



Welcome to Monster Power Equipment Incorporated

Congratulations!

You are now the owner of a state of the art, quality leaf and debris vacuum from Monster Power Equipment, Inc.

Monster Power Equipment manufactures a diversified line of HIGH PERFORMANCE power equipment for leaf and debris solutions, focused on the commercial and municipal lawn care markets.

Team Monster has taken professional landscaping power equipment to a higher standard, offering a robust, uniquely designed, and high performance line of equipment. Monster Power Equipments is designed to meet the challenges of the highly competitive landscape market, providing: flexibility, productivity, and performance, at the same time addressing today's environmental demands.

Table of Content:	Page #:
Introduction _____	2
Safety Rules / Precautions and Graphic Warning _____ (Fed. / CARB and ANSI regulations)	2 - 5
Assembly Instructions _____	6-11
Technical Information – Engine, Fuel and Oil _____	12
Operations – Check Points, Preparation, and Operating Instructions _____	13-15
Transportation – Towing requirements _____	16
Maintenance and Storage _____	17
Replacement Parts _____	18-19
Warranty _____	20

Note: Specifications, illustrations and product descriptions in this manual are accurate as of the date printed.



Introduction

Monster Power equipment is constructed with heavy gauge metals, and high performance, fuel efficient EPA compliant gas engines, designed for the removal of leaf and debris quickly and efficiently from ground to truck. Proper and timely maintenance will assure years of safe, service free, reliable operations.

Please read and understand all safety rules and precautions, and technical, assembly, and operational material before operating your Monster power equipment.

Safety Rules and Precautions



Before starting machine, please carefully read and comply with all safety instructions to reduce the risk of accidents and serious personal injury.

DO NOT EXPOSE YOURSELF AND OTHERS TO DANGER!

- ❑ **Follow the general safety rules.**
- ❑ **Do not permit others to run machines unless they are properly trained in its operation.**



Safety Rules and Precautions

Eye Protection: Always wear safety goggles while operating machine.

Hearing Protection: Always wear hearing protection when operating machine.

Gloves: Always wear protective gloves.

Clothing: Dress properly. Do not wear loose clothing that could become caught in moving parts of the unit (i.e., intake hoses). Long hair should be tied back. Safe, sturdy, non-skid footwear should be worn at all times.



WARNING / DANGER

DO NOT USE the machine if it is damaged or poorly adjusted.

DO NOT remove, guards, shields or safety decals. If a shield, guard or decal is damaged or doesn't function, repair or replace before operating machine.

DO NOT USE any attachment with this leaf and debris machine other than what's offered or recommended by Monster Power Equipment, Inc. because it may cause serious injury to the operator or others in close proximity to machine.

DO NOT USE this machine for any job other than those for which it is intended as described in this manual.

WARNING: KEEP CHILDREN, PETS, AND BYSTANDERS AWAY. Do not permit children to contact machine. Children and on lookers should be kept at a safe distance from work area (100 feet/30meters).

ALWAYS keep a safe distance between two or more operators when working together.

WARNING: When approaching an operator of the machine, be careful not to startle or distract the operator, which may cause an unsafe situation. Carefully call his attention and confirm that the operator **STOPS** the machine prior to approaching them.

NEVER leave machine unattended while operating or engine is running.

BEWARE that the machine is loud and during normal operation it may interfere with verbal communication.

NEVER ALLOW individuals to operate the machine that are not mentally capable.



Safety Rules and Precautions, cont.

NEVER ALLOW individuals to operate the machine if they are tired, taking prescription medication, or are under the influence drugs or alcohol.

NEVER ALLOW individuals to ride, sit, or stand on the machine.

NEVER stand in front or behind the machine when operating; the operator **MUST** stay to the side of the machine.

DO NOT park machine on a steep grade or slope; the machine can roll away causing personal injury or damage to property.

NEVER TRANSPORT the machine while engine is still running.

NEVER TAMPER with governor springs, links, or any other component that may change the governed engine speed.

NEVER look into the hose or discharge chute while machine is running. The discharge chute should always be aimed into a closed, well-ventilated container.

KEEP hands away from hose inlet and discharge chute.

NEVER start or operate machine without suction hose attached properly.

KEEP machine away from FIRE or SPARK.

CAUTION: If tow behind machine is **NOT** attached to towing vehicle, the stabilizer leg brace must be in the down position and the pin locked in place during start up and operation of machine. The machine **COULD FLIP OVER** if stabilizer leg is not down and locked into position when the engine is brought up to operating speed.

CHECK MOUNTING HARDWARE DAILY!



IMPELLERS

WARNING / DANGER: The engine does **NOT IMMEDIATELY STOP** the impeller from rotating.

WARNING / DANGER: If excessive vibration occurs, **TURN OFF** engine, wait for impeller to stop rotating, and disconnect spark plug wires and check for lodged foreign material, damaged impeller, and loose impeller bolt or key.

WARNING / DANGER: **NEVER** try to remove debris from intake or discharge tube when engine is running **OR** impeller is still rotating.



General Safety Rules and Precautions, cont.

GRAPHIC WARNINGS

The following stickers are applied to the machine to indicate safety warnings. Do not remove safety stickers and replace any stickers should they become worn.

It is the responsibility of the operator to carefully follow all safety requirements to avoid personal injury or destruction of property.



35HP Truck Loader & Skid Mount

Please read and follow all instructions to insure proper assembly.

Skid Mount Power Unit: PN# MPE-SM35BVG

Crate content:

- 1 - Power Unit: Includes Fuel Cell and Battery & Box
- 1 - Discharge Stack
- 1 - Discharge Exhaust Chute
- 1 - Metal Discharge Hose 12" x 5' w/ clamp
- 1 - 10' Intake Hose 16" dia.
- 1 - Nozzle
- 1 - Boom assembly
- 1 - Intake Hose Support Strap 16"
- 1 - Assembly Hardware kit
- 1 - Operation Manual and Warranty Registration package

Tow-Behind Power Unit: PN# MPE-TL35BVG

Crate content:

- 1 - Power Unit (Frame with support jack and stabilizer leg) Assembled w/ Wheels/Tires, Fenders, Tail light assembly & license plate frame, Fuel Cell, Battery & Box
- 1 - Discharge Stack
- 1 - Discharge Exhaust Chute
- 1 - Metal Discharge Hose, 12" dia. X 5'W/clamp
- 1 - 10' Intake Hose 16" dia.
- 1 - Nozzle
- 1 - Boom assembly
- 1 - Hose Support Band 16" dia.
- 1 - Assembly Hardware kit
- 1 - Operation Manual and Warranty Registration package



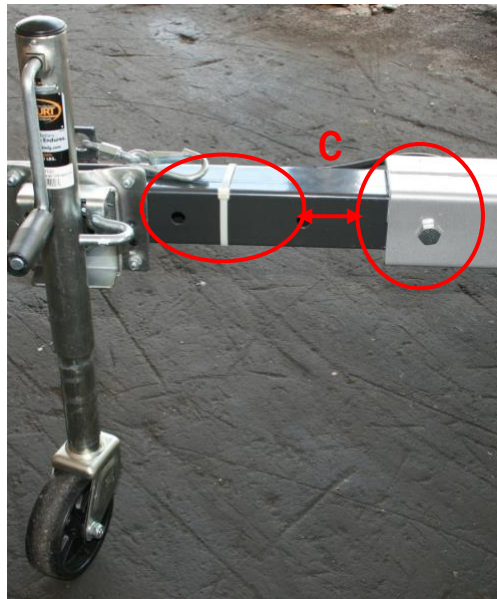
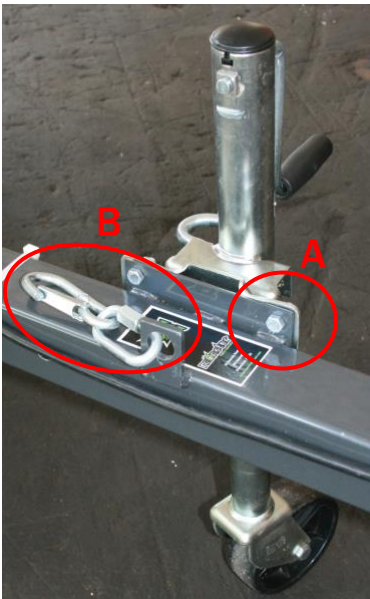
Assembly Instructions

Uncrate Unit & Assemble

- STEP 1:** (A) Remove outer crating and protective covering
(B) Unfasten exhaust stack and elbow from pallet
(C) Use a hammer to break off the wooden cradle that holds up the Trailer Frame



- STEP 2:** (A) Install Jack to Draw Bar w/(4) 3/8" x 1 1/4" bolts (4) lock washers,(4) 3/8" nuts.
(B) Attach Quick Link Safety Hook to Retaining ring on Draw Bar (Tow-Behind only)
(C) Install Draw Bar into Trailer Frame w/ (2) 5/8"x 4 1/2" bolts (2) 5/8" lock nuts

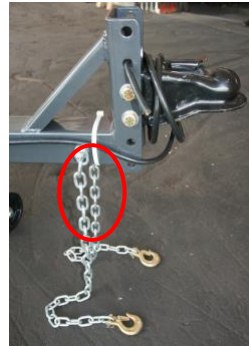


Important Note: Stabilizer Leg needs to be put in the down position before un-coupling to insure unit doesn't tip or roll over.

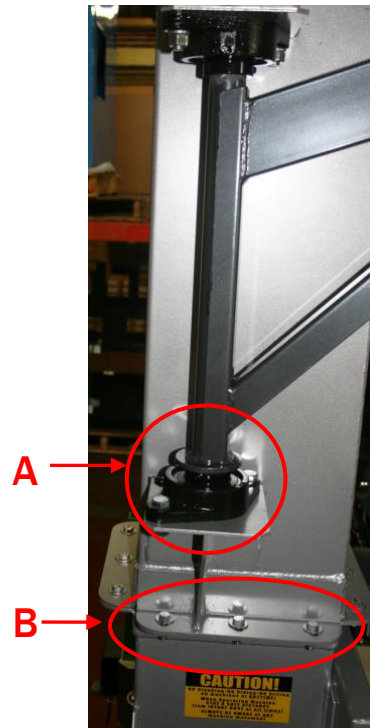


Assembly Instructions, cont.

- STEP 3:** (D) Install Safety chains to Draw Bar w/
(2) 1/2"x 5 1/2" bolts & (4) 1/2" flat washers and
(2) lock nuts



- STEP 4:** (A) Install (2) 2 1/2" Bearings onto stack mounting plates using (4) 1/2" x 1 1/4" bolts, (4) 1/2" lock washers, (4) 2 1/2" nuts
(B) Install vertical Debris Stack w/Boom mounts positioned on right rear to impeller housing (12) 3/8"x 1 1/4" bolts (24) flat washers (12) 3/8" lock washers (12) 3/8" nuts

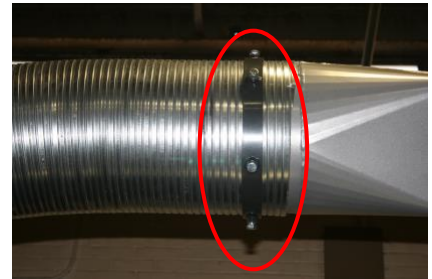


Assembly Instructions, cont.

STEP 5: (B) Install Debris Elbow to stack (12) 3/8" x 1 1/4", (24) 3/8" flat washers, (12) 3/8" lock washers and (12) 3/8" nuts



(C) Install Metal Discharge Hose (1) Clamp 12" Heavy Duty Fasten with (6) 1/2 x 1" bolts



(D) Install Boom assembly on to Debris stack (No hardware required)



Step 1: Slide boom up into top mount position

Step 2: Slide bottom of boom into lower mount position

Important Note: Don't Stand on Unit.

Warning: Heavy weight. May need assistants installing.

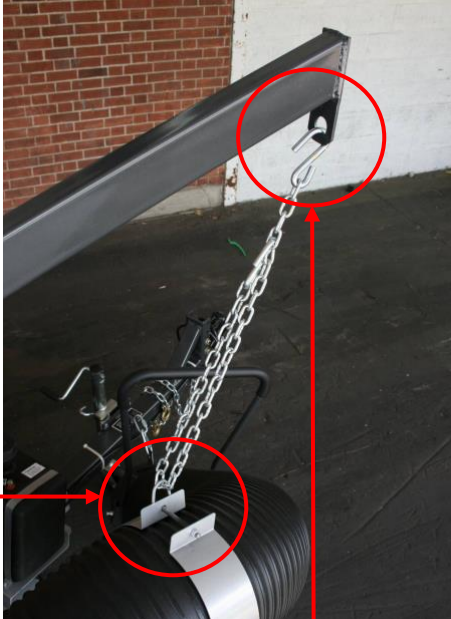


Assembly Instructions, cont.

STEP 6: (A) Install Intake Hose to Housing (2) Hose Clamps 16"



**(B) Install Hose Support Band
(Approximately 6 1/2' from Intake Housing)
(1) 3/8" x 3 1/2" bolt and (1) 3/8" lock nut**



**(C) Install Handle into Nozzle
(2) 3/8" x 1 1/4" and (2) 3/8" nuts**

Important Note: Handle needs to face up and back

(D) Install Nozzle into Hose (1) 16" Hose Clamp

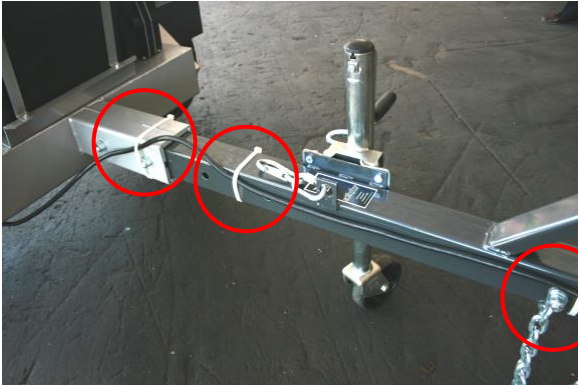


(E) Install Support chain (4') between Hose and Boom



Assembly Instructions, cont.

Step 7: (A) Secure Wiring Harness to Draw Bar w/ (3) 16" Tie Wraps



(B) Connect Battery (2) 5/16" x 1" Carriage Bolts and (2) 5/16" nuts
Battery installation (acid not included)

Safety Note: EYE PROTECTION and GLOVES are REQUIRED.
Battery Acid Activation should be added in a ventilated area.



Service Engine – See engine manufacturer's manual.



Technical Information

EPA SMALL ENGINES EMISSION REQUIREMENTS

Refer to engine manufacture manual for specifications and requirements related to the engine.
All engines are compliant with EPA and the California Emission regulations (CARB).



WARNING / DANGER: "Proposition 65" engine exhaust contains chemicals known to the state of California to cause cancer, birth defects, or other reproductive harm.

TECHNICAL DATA

Model	SM35BVG	TL35BVG	SM36YAN	TL35YAN
Engine	35HP Vanguard	35HP Vanguard	36HP Diesel Yanmar	35HP Diesel Yanmar
Displacement <small>cm³(cu. in)</small>	720 (43.9)	720 (43.9)	896 (54.68)	896 (54.68)
Starter	Electric Start	Electric Start	Electric Start	Electric Start
Fuel Capacity	7 Gal. EPA (Low Perm)	7 Gal. EPA (Low Perm)	7 Gal. EPA (Low Perm)	7 Gal. EPA (Low Perm)
Oil Capacity	1.55 Liter	1.55 Liter	2.5 Liter (Approx. 80 oz)	2.5 Liter (Approx. 80 oz)
Vacuum Hose	16" dia.x 10'	16" dia.x 10'	16" dia.x 10'	16" dia.x 10'
Discharge	12 inch	12 inch	12 inch	12 inch
Truck Mounting		2.5/16 Ball		2.5/16 Ball
Hitch (Options)		2" Ball/ Pintle		2" Ball/ Pintle
Class Requirements		Class 3		Class 3
Impeller	All Models: 4 Blade 1/2" in. w/ Steel Taper Locking Hub			
Dimensions	Skid Series TL Series 112	Shipped - 38" L X 40" W X 32" H Shipped - 45" L X 55" W X 43" H	Assembled 40" X 37" X 98 Assembled 84" X 55" X	
Dry Weight	850 lbs.	1240 lbs.	1400 lbs.	1700 lbs.



Safety Rules & Precautions to Observe: Fuel, Oil, and Engine

FUEL

DO NOT attempt to re-fuel **HOT** engines. Allow machine to cool down for 2 minutes before removing cap.

DO NOT over fill fuel tank. Fill tank to approximately 1½” below filler neck to allow for fuel expansion.

DO NOT add fuel to tank in a **CLOSED NON-VENTILATED AREA**, or near **SPARKS** or **OPEN FIRE**.

DO NOT re-fuel engine while it is running.

DO NOT smoke while handling fuel or filling tank.

Wipe off spilled fuel before attempting to start engine.

Fuel should always be stored in an approved, clearly marked container.

OIL: ALL MONSTER POWER EQUIPMENT IS SHIPPED WITHOUT OIL!

Refer to engine manufactures instruction manual for instructions on filling the oil.

ENGINE

REFER TO the engine manual for proper engine preparation and operation.

ENSURE spark plug, muffler, fuel cap, and air cleaner are properly installed.

WIPE OFF spilled fuel before attempting to start engine.

DO NOT crank engine with spark plug removed.

DO NOT choke carburetor to stop engine; instead reduce to idle and turn switch to stop position.

NEVER make engine adjustments while machine is running. Always make adjustments while on a flat and even surface.

NEVER place unit in any areas where there are flammable materials (i.e., dry grass, etc.), combustible gases, or liquids.

NEVER tamper with the engine speed selected by the manufacturer.

NEVER run engines at excessive speeds. This may result in injury and/or damage to the unit.

NOTE: Lead/Acid batteries generate hydrogen/oxygen gases. Keep sparks and flames away at all times.



Preparing for Operations

Inspect unit; make sure all guards and deflectors are in place. Check all nuts and bolts to ensure they are installed and properly tightened to appropriate torque specifications.

Repair or replace, as necessary, any missing or damaged components before operating unit. Clean the unit; especially areas such as fuel cell and air cleaner for dirt and debris. Fuel stored longer than 2 months should be drained and replaced.

Reasonable care must be taken when operating equipment. Inspect work area and unit before operating. Make sure all operators of this specific model machine are properly trained and have reviewed all safety rules and precautions.

CHECK POINTS BEFORE OPERATION

Before Starting Engine: Review engine manual when necessary.

To Start Engine:

- Check Oil level (Daily)
- Turn fuel shut off valve to open
- Put choke control in “CHOKE” position (Briggs VG only)
- Move throttle control 1/3 of the way toward high speed position
- Turn key to the START position
- Let engine warm up. Slowly adjust CHOKE (Briggs VG only) toward “RUN” position

To Vacuum: Engine must be running.

- Option 1: Hold the handle of intake nozzle and move in a sweeping motion over debris.
- Option 2: Place intake nozzle on the ground and rake leaves and debris in the direction of the nozzle opening.

To Stop Engine:

- Move the throttle control to the slow position
- Turn key to off position
- Close fuel valve
- Note: Impeller will continue to rotate for several seconds after engine is stopped.



Warning / Danger



Never attempt to remove leaves or debris from any part of the equipment while the engine is running or the impeller is rotating!

DEBRIS BLOCKAGE

When experiencing a decrease in suction, there may be a debris blockage in the hose or housing.

Remove Debris Blockage / Hose

- ❑ Grab handle of intake nozzle, stretch hose out into a straight line with respect to the inlet of the vacuum unit while the engine is at FULL throttle.

Remove Debris Blockage / Housing

If after completing the steps above, a decrease in suction still exists, look for blockage in housing.

To inspect housing for blockage complete the following steps:

- ❑ Turn off engine and wait until all moving parts have stopped, including impeller.
- ❑ Disconnect plug wires from spark plugs on engine.
- ❑ Remove hose assembly from the inlet housing.
- ❑ With the hose assembly disconnected from inlet housing, remove any debris from inside of housing.



Caution: Gloves should be worn when clearing debris from inside the housing. Impeller blades are sharp. Housing may also contain other sharp objects, such as glass, aluminum, sticks, etc.

- ❑ Inspect discharge chute for debris and remove any clogs.
- ❑ Re-assemble unit, re-connect spark plug wires and resume operation

RECOMMENDATION FOR OPTIMAL PERFORMANCE

DRY DEBRIS: Run engine at ½ throttle.

WET DEBRIS: Run engine at full throttle.



TOW BEHIND MACHINE

Uncoupling TL Unit



Caution: Failure to follow uncoupling instructions can result in unit rollover and serious personal injury and unit damage.

- DROP REAR STABILIZER LEG TO FIRM FLAT SURFACE.**
- Secure with spring loaded pin.
- Disconnect taillight/brake wiring harness and safety chains.
- Unlatch support jack and rotate to vertical position and lock.
- Disconnect ball hitch/Pintle hook receiver on unit
- Crank down support jack until ball hitch/Pintle hook receiver on unit clears ball hitch/Pintle hook on towing vehicle.
- Pull vehicle away from unit.

Towing Vehicle

Coupling TL Unit

- Attach nozzle onto draw bar locking clip for transporting.
- Securely attach unit to ball hitch/Pintle receiver.
Note: Confirm that Ball/Pintle hitch is secured.
Unit will detach from vehicle if not properly secured. Refer to manual for correct ball size.
- Attach safety chains and connect taillight / brake wiring harness.
- Raise rear stabilizer leg into upright position
- Crank up support jack stand and unlatch; rotate jack until locked in the horizontal position

SKID MOUNT

- Make sure that engine is turned off.
- Turn fuel valve to the OFF position.
- Check to insure that the carabineer chain on nozzle is secured (based on the units mounting provisions)
- After use make sure unit is secured



Maintenance & Storage

GENERAL MAINTENANCE

SHUT OFF the engine, ensure fuel valve is in **OFF** position, and all spark plug wires are detached from spark plugs before general maintenance is performed or any type of repairs. It is recommended to disconnect the battery for any major repair.

Always refer to engine manual when it comes to maintenance and repair.

Clear intake screens on housing and engine throughout use.

Keep blower, drives and specifically engine air screen and cooling fins clean and free of grass and leaves to reduce the chance of fire and to permit proper cooling

Check all nuts and bolts are installed and properly tightened to appropriate torque specifications (Especially Impeller bolts). Repair or replace worn, damaged or missing parts immediately

Inspect Impellers regularly. Look for worn, bent or cracked blades. Replace only never try to straighten or weld.

Used only recommended parts, fluid and lubricants specified by engine manufacture. (Refer to engine manual)

Check Tire air pressure regularly. Specifications are on sidewall of tire.

Keep air filters clean and refer to engine manufactures for cleaning and replacement procedures.

Replace all worn or damaged decals.

STORAGE

Never store unit indoors or in a poorly ventilated areas unless fuel cell is empty. Fumes may reach open flames, spark or pilot as in furnace or other gas appliances.

Disconnect battery when storing unit for any period of time.

When unit is in storage for long periods (60 Days or more) of time fuel should be drained from fuel cell and carburetor, clean parts to prevent gum deposits from forming and causing malfunction of engine. Drain fuel outdoors, into approved fuel container, away from any form of open flame or spark
Run engine until fuel is empty from fuel cell and engine stops.

Note: Fuel Stabilizer can be used. Please refer to engine manufacture manual.



Replacements Parts: 35HP SKID Mount & Tow Behind Truck Loaders

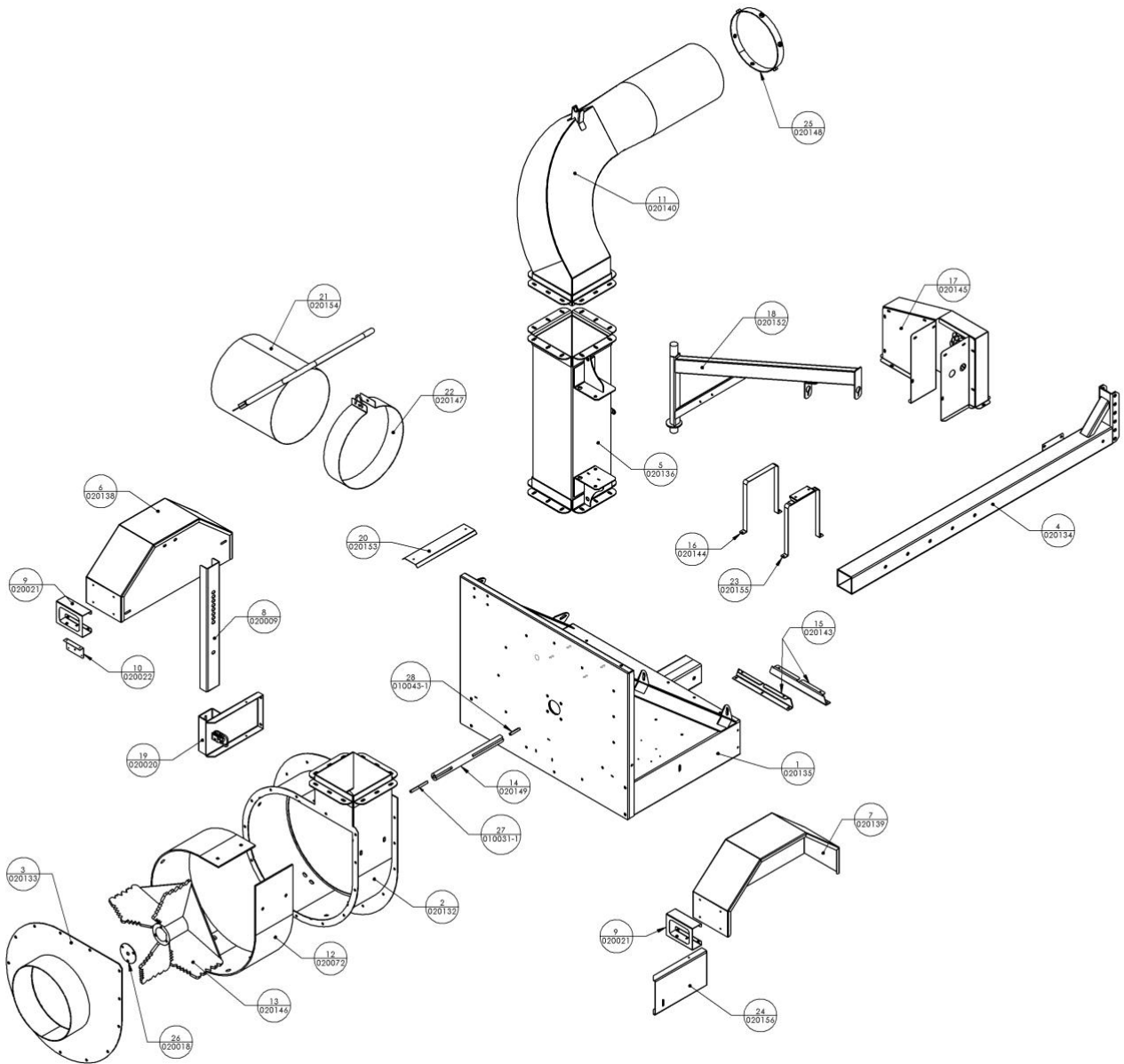
Item	Part Number	Description	Qty.
1	020135	Trailer Base	1
2	020132	Blower Housing	1
3	020133	Intake Flange, 16" Hose	1
4	020134	Draw Bar Assembly	1
5	020136	Discharge Stack	1
6	020138	Fender Assembly, Left	1
7	020139	Fender Assembly, Right	1
8	020009	Rear Support Post	1
9	020021	Tail Light Bracket	2
10	020022	License Plant Bracket	1
11	020140	Discharge Elbow	1
12	020072	Housing Liner Kit	1
13	020146	Impeller	1
14	020149	Impeller Shaft	1
15	020143	Fuel Tank Bracket	2
16	020144	Fuel Tank Hold-Down Strap	1
17	020145	Belt Guard Kit	1
18	020152	Boom Assembly	1
19	020066	Extension Channel with Spring Latch	1
20	020153	Muffler Cover	1
21	020154	16" Nozzle	1
22	020147	16" Belly Band	1
23	020155	Tank Strap with Evaporative Bracket	1
24	020156	Frame Extension	1
25	020148	12" Flex to Elbow Clamp	1
26	020018	Cover Plate	1
27	010031-1	3/8" SQ X 4.5" Key	1
28	010043-1	3/8" SQ X 2.5" Key	1

Optional Accessories:

010012	Safety Pkg. (2 Orange Cones & Wheel Chocks w/Holder) Tow Behind only
010032	Universal Light Kit
040004	Pintel Hitch Coupler (adjustable)
040006	2" Hitch Coupler (adjustable)



Replacements Parts: 35HP Skid Mount & Tow Behind Truck Loaders



Ordering information: Contact authorized Monster Power Equipment dealer



Limited Warranty

The limited warranty set forth below is given by MONSTER POWER EQUIPMENT, INC. ("MPE") with respect to new merchandise purchased and used in the United States or Canada, its possessions and territories (the "Products").

Except as otherwise provided herein, MPE warrants its Products against defects in material and workmanship for a period of 18 months commencing on the date of original purchase and, for Products that shall be rented by the purchaser to third parties, for 90 days. MPE shall, at its option, repair or replace, free of charge, any part found to be defective in material or workmanship during the applicable warranty period. This limited warranty shall only apply if the Product has been operated and maintained in accordance with the operating manual furnished with the Product, and has not been subject to misuse, abuse, neglect, accident, improper maintenance, alteration, vandalism, theft, fire, water or damage because of other peril or natural disaster. Damage resulting from the installation or use of any accessory or attachment not approved by MPE for use with its Products will void this limited warranty as to any resulting damages.

Normal wear parts, consisting of drive belts, hydraulic hoses, tires and batteries, not subjected to misuse, abuse, neglect, accident, improper maintenance, alteration, vandalism, theft, fire, water or damage because of other peril or natural disaster are warranted to be free of defects in material and workmanship for a period of 90 days commencing on the date of original purchase.

HOW TO OBTAIN SERVICE: Warranty service is available, WITH PROOF OF PURCHASE THROUGH AN AUTHORIZED SERVICE PROVIDER. To locate the dealer in your area, please contact MPE at 860 213-1981.

This limited warranty does not provide coverage in the following cases:

- a. The Product's engine or component parts thereof. These items carry a separate manufacturer's warranty. Please refer to the applicable manufacturer's warranty on these items.
- b. Routine maintenance items, other than normal wear parts, such as lubricants, filters, tune-ups and normal deterioration of the exterior finish due to use or exposure.
- c. Service completed by a party other than an authorized distributor/dealer (service provider).
- d. Replacement parts that are not MPE authorized parts.
- e. Transportation and service calls.
- f. MPE does not extend any warranty for Products sold or exported outside of the United States of America and Canada, its possessions and territories, except those sold through MPE's authorized channels of export distribution.

No Implied warranty, including any Implied warranty of merchantability or fitness for a particular purpose, applies after the applicable period of express written warranty above as to the parts as identified.

No other express warranty or guaranty, whether written or oral, except as mentioned above, given by any person or entity, including a distributor, dealer or retailer, with respect to any Product shall bind MPE. During the period of this Warranty, the exclusive remedy is repair or replacement of the Product as set forth above.

The provisions as set forth in this Warranty provide the sole and exclusive remedy arising from any defect in the material or workmanship of a Product or the components thereof. MPE shall not be liable for incidental or consequential loss or damages including, without limitation, expenses incurred for substitute or replacement equipment, for transportation or for related expenses, or for rental expenses to temporarily replace a warranted Product.

In no event shall recovery under this Warranty of any kind be greater than the amount of the purchase price paid for the Product. Alteration of the safety features of the Product shall void this Warranty. You assume the risk and liability for loss, damage, or injury to you and your property and/or to others and their property arising out of the use or misuse or inability to use the Product.

This limited warranty shall not extend to anyone other than the original purchaser of the Product.

If any provision of this express limited warranty is found to be invalid or unenforceable, then the remainder shall have full force and effect, and the invalid provision shall be partially enforced to the maximum extent permitted by law.

This express limited warranty will be interpreted, construed and enforced in all respects in accordance with the laws of the State of Connecticut, without reference to its choice of law rules.

The Superior Court for the Judicial District of Hartford or the United States District Court for the District of Connecticut will be the sole and exclusive courts of proper jurisdiction and venue of and for any and all legal proceedings relating to this express limited warranty. MPE and the purchaser hereby irrevocably consent to such designation, jurisdiction and venue and waive any objection or defense relating to jurisdiction or venue with respect to any lawsuit or other legal proceeding initiated in or transferred to the Superior Court for the Judicial District of Hartford or the United States District Court for the District of Connecticut.

How State Law Relates to this Warranty: This limited warranty gives you specific legal rights, and you may also have other rights which vary from state to state. In some states limitations on how long an implied warranty lasts or the exclusion or limitation of incidental or consequential damages may not be allowed and therefore inapplicable.

All specifications are subject to change without notice.





About us

Monster Power Equipment Incorporated, (MPE) was established in April of 2011, offering an innovative array of leaf and debris management solutions to the landscape professionals in the commercial and municipal markets.

Monster Power Equipment was established by Sound Manufacturing, Inc, a leading provider of metal fabrication services and contract manufacturing, providing technology, engineering, assembly, logistic capabilities and expertise to commercial and industrial markets. With our expertise in engineering and manufacturing, we are able to bring to you a new, vastly improved series of leaf and debris equipment.

Our Strategy

To provide the end consumer with quality, innovative solutions that increase their efficiency and flexibility, enabling them higher return on investments and profitability.

Our Business Model

To provide the end consumer with quality, innovative solutions that increase their efficiency and flexibility, enabling them higher return on investments and profitability.

Sound Manufacturing, Inc. was established in 1984 and is an ISO 9001: 2008 registered manufacturer.

With 27 years in engineering and fabrication experience, Sound provides the stability and experience to develop and manufacture a product line in the leaf and debris solution industry.

A Perfect FIT.

Monster Power Equipment, Inc. will deliver high quality, value driven equipment designed to increase productivity and profitability.

Power Designed with BITE.



All specifications are subject to change without notice.